

The logo for Terraco, featuring a stylized icon of four vertical bars of varying heights to the left of the word "TERRACO" in a bold, white, sans-serif font. A registered trademark symbol (®) is located at the top right of the word. The logo is set against a solid blue background.

**TERRACO®**

The product name "Terralite Stone" is displayed in a large, white, sans-serif font. The text is contained within a dark grey, rounded rectangular shape that overlaps the bottom of the building image. A faint paw print graphic is visible behind the text on the right side.

**Terralite™ Stone**



## Stone Effect Exterior Coating

Terralite is a range of decorative coatings created with naturally graded stone aggregates encapsulated in a clear resin binder that gives a natural stone effect.

**Terralite Stone** is a stone effect exterior acrylic render designed to be spray applied for a hammer finished granite effect. It is based on pure acrylic polymers and mineral aggregates that gives a distinctive stone simulation.



### *Excellent weather and UV resistance*

Terralite Stone has been developed to withstand extreme climatic conditions like the extreme heat of Middle Eastern deserts, severe monsoons of Asia and the harsh cold of the Scandinavian region.



### *Excellent abrasion resistance*

Terralite Stone is designed to withstand impact and abrasion in low lying areas of buildings which are exposed to everyday wear and tear.



### *Outstanding Flexibility*

Terralite Stone has outstanding flexibility which reduces the possibility of cracking and flaking.



## Other Features and Benefits

- ◆ Quick drying properties in both low and high temperatures
- ◆ Good vapour permeability allows the substrate to breathe reducing water vapour damage
- ◆ Water based and environmentally friendly
- ◆ Available in bespoke range of colours



# Terralite Stone

## Terralite Stone is perfect for

- ◆ Exterior applications
- ◆ Interior Accent or Feature Walls
- ◆ New work and renovation / retrofit projects
- ◆ All types of buildings - residential, commercial, leisure, educational, pre-fabricated, boundary walls and more

## Areas of use

- ◆ Concrete
- ◆ Cement Render
- ◆ Lightweight Concrete
- ◆ Cement Fibre Boards
- ◆ Sprayplasters
- ◆ Gypsum Dry Wall
- ◆ Chipboard

Recommended for:



## How to use

### New work

- 1 Roller apply 1 coat of Terraco P Primer Pigmented and allow to dry.
- 2 Roller apply 1 coat Terralite Undercoat and allow to dry.
- 3 Spray apply Terralite Stone.

### Renovation / Retrofit

- 1 All cracks, chips, voids and damages should be repaired with appropriate filler.
- 2 Prepare surface by removing loose or flaking paint, grease, dirt and grime.
- 3 Spot prime exposed areas appropriately.
- 4 Proceed as per new work.

*\*Contact your local Terraco representative for site specific method statement*



## Guideline Spread Rates

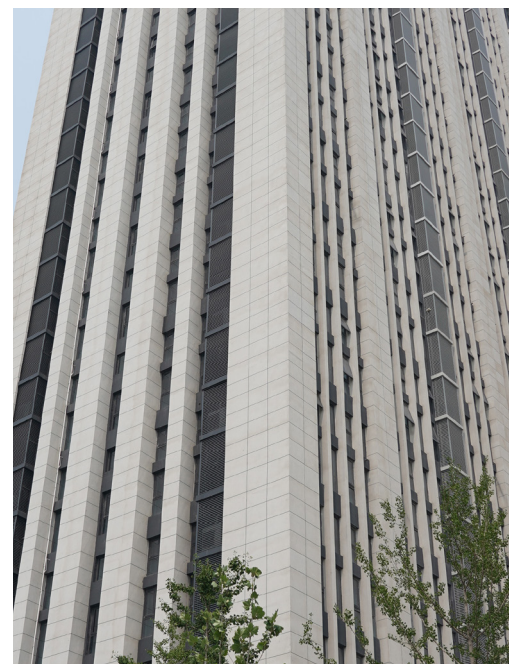
Onto cementitious substrate, cement fibre board.

P Primer Pigmented	0.15-0.2 kg/m <sup>2</sup>
Terralite Undercoat	0.2-0.3 kg/m <sup>2</sup>
Terralite Stone	2.5-3.5 kg/m <sup>2</sup>

*\*Material consumption may vary depending on substrate conditions*

## Technical Data

Coating Thickness	1.5-2.0mm
Specific Gravity	1.70
Packaging	25kg plastic pails
Storage	12 months in original unopened containers





[www.terraco.com](http://www.terraco.com)

SWEDEN • UK • IRELAND • RUSSIA • TURKEY • ALGERIA • EGYPT  
SOUTH AFRICA • JORDAN • UAE • THAILAND • VIETNAM • CHINA • KOREA

