

//// TERRACO®



Terralite™
QuartzStone



Multi-Coloured Granite Effect Coating

Terralite is a range of decorative coatings created with naturally graded stone aggregates encapsulated in a clear resin binder that gives a natural stone effect.

Terralite QuartzStone is a multi-coloured coating system designed to realistically simulate natural granite. It has a built-in texture based on marble chips and is available in a range of colours and finishes.



Excellent weather resistance

Terralite QuartzStone has been developed to withstand extreme climatic conditions like the extreme heat of Middle Eastern deserts, severe monsoons of Asia and the harsh cold of the Scandinavian region.



Excellent abrasion resistance

Terralite QuartzStone is designed to withstand impact and abrasion in low lying areas of buildings which are exposed to everyday wear and tear.



Excellent UV resistance

Terralite QuartzStone has been manufactured using UV stabilizers to protect the coating from the damaging UV rays. These UV stabilizers absorb or screen out UV radiation, preventing surface damage.



Other Features and Benefits

- ◆ Excellent dirt pick-up resistance
- ◆ High algal and fungal resistance
- ◆ Water based and environmentally friendly
- ◆ Available in bespoke range of colours



Terralite QuartzStone is perfect for

- ◆ Exterior applications
- ◆ Interior Accent or Feature Walls
- ◆ New work and renovation / retrofit projects
- ◆ All types of buildings - residential, commercial, leisure, educational, pre-fabricated, boundary walls and more

Areas of use

- ◆ Concrete
- ◆ Sand-Cement Render
- ◆ Lightweight Concrete
- ◆ Cement Fibre Boards
- ◆ Sprayplasters

Recommended for:



How to use

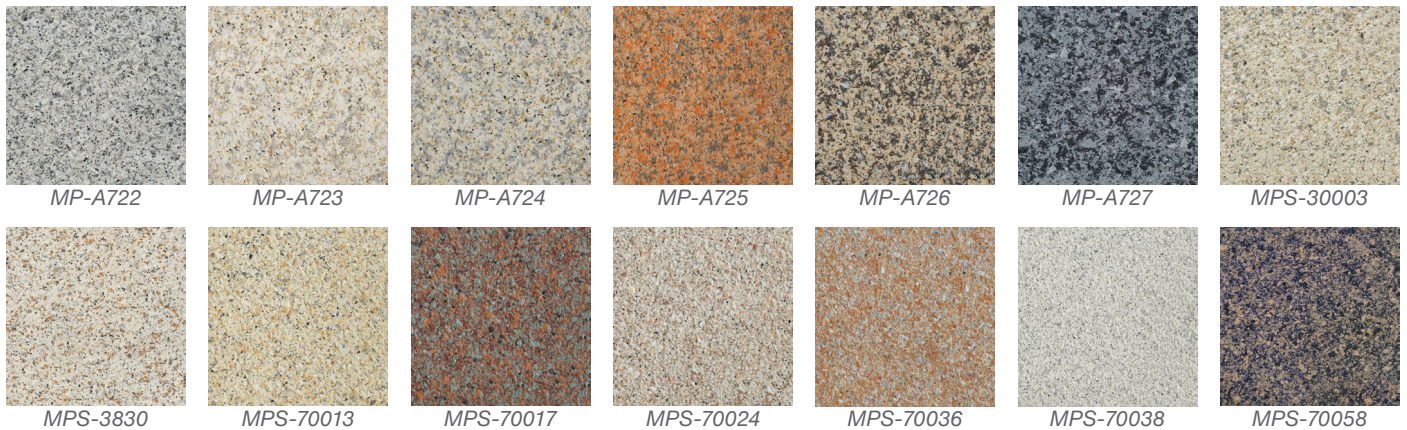
New work

- 1 Roller apply 1 coat of Terraco P Primer Pigmented and allow to dry.
- 2 Apply Terralite QuartzStone by airless spray using a multi-colour gun. Application is in 2 coats at a total rate of 1.6-2.0 kg/m².
- 3 Allow the product to dry overnight and apply Terraco Topcoat Clear if required.

Renovation / Retrofit

- 1 All cracks, chips, voids and damages should be repaired with appropriate filler.
- 2 Prepare surface by removing loose or flaking paint, grease, dirt and grime.
- 3 Wash down the surface with a sugar soap solution, rinse and allow to dry before repairing or applying the primer.
- 4 Proceed as per new work.

**Contact your local Terraco representative for site specific method statement*



Guideline Spread Rates

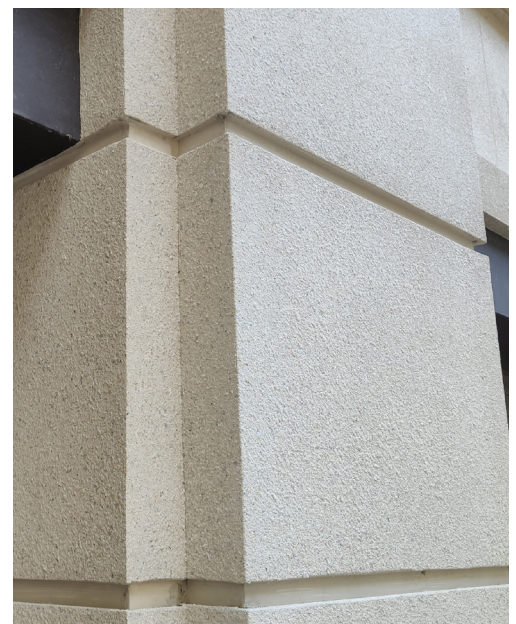
Onto cementitious substrate, cement fibre board.

P Primer Pigmented	0.15-0.2 kg/m ²
Terralite QuartzStone	1.6-2.0 kg/m ²

**Material consumption may vary depending on substrate conditions*

Technical Data

Coating Thickness	1-1.5mm
Specific Gravity	1.15
Packaging	5Kg and 20Kg plastic pails
Storage	12 months in original unopened containers





www.terraco.com

SWEDEN • UK • IRELAND • RUSSIA • TURKEY • ALGERIA • EGYPT
SOUTH AFRICA • JORDAN • UAE • THAILAND • VIETNAM • CHINA • KOREA

