

The logo features five vertical white bars of varying heights to the left of the word "TERRACO" in a bold, white, sans-serif font. A registered trademark symbol (®) is located at the top right of the word.

**||||| TERRACO®**

The text "Terralite Fine" is written in a white, sans-serif font on a dark red, rounded rectangular background. A small trademark symbol (™) is positioned between "Terralite" and "Fine". A decorative graphic of five red circles of varying sizes is located to the right of the text.

**Terralite™ Fine**



## Granular Natural Stone Coating

Terralite is a range of decorative coatings created with naturally graded stone aggregates encapsulated in a clear resin binder that gives a natural stone effect.

**Terralite Fine** is a granular natural stone coating created from finely graded natural coloured marble chips, bound in a transparent new generation resin.



### *Excellent weather resistance*

Terralite Fine has been developed to withstand extreme climatic conditions like the extreme heat of Middle Eastern deserts, severe monsoons of Asia and the harsh cold of the Scandinavian region.



### *Excellent abrasion resistance*

Terralite Fine is designed to withstand impact and abrasion in low lying areas of buildings which are exposed to everyday wear and tear.



### *UV Stable*

Terralite Fine has been manufactured using UV stabilizers to protect the coating from the damaging UV rays. These UV stabilizers absorb or screen out UV radiation, preventing surface damage.



## Other Features and Benefits

- ◆ Outstanding flexibility which reduces the possibility of cracking and flaking
- ◆ Good vapour permeability allows the substrate to breathe reducing water vapour damage
- ◆ Water based and environmentally friendly
- ◆ Available in bespoke range of colours



## Terralite Fine is perfect for

- ◆ Exterior applications
- ◆ Interior Accent or Feature Walls
- ◆ New work and renovation / retrofit projects
- ◆ All types of buildings - residential, commercial, leisure, educational, pre-fabricated, boundary walls and more

## Areas of use

- ◆ Concrete
- ◆ Cement Render
- ◆ Lightweight Concrete
- ◆ Cement Fibre Boards
- ◆ Sprayplasters
- ◆ Gypsum Dry Wall
- ◆ Chipboard

Recommended for:



## How to use

### New work\*

- 1 Roller apply 1 coat of Terraco P Primer Pigmented and allow to dry.
- 2 Roller apply 1 coat Terralite Undercoat and allow to dry.
- 3 Apply Terralite Fine with a steel trowel. Finish with a wet trowel to achieve a smooth and even surface.

### Renovation / Retrofit\*

- 1 All cracks, chips, voids and damages should be repaired with appropriate filler.
- 2 Prepare surface by removing loose or flaking paint, grease, dirt and grime.
- 3 Spot prime exposed areas appropriately.
- 4 Proceed as per new work.

*\*Contact your local Terraco representative for site specific method statement*



## Guideline Spread Rates

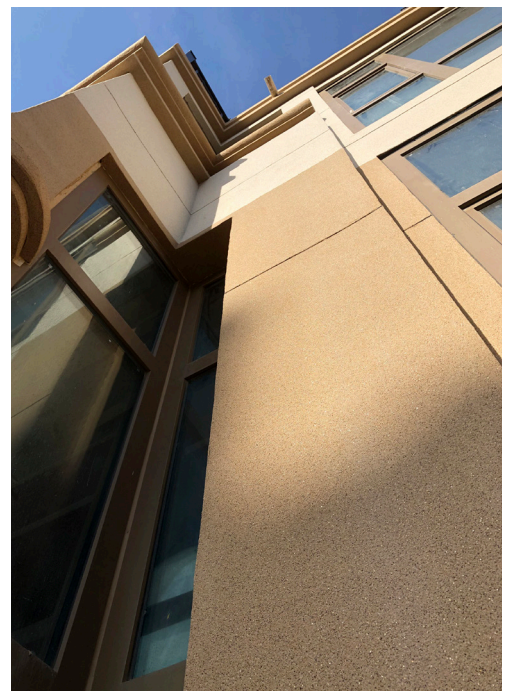
Onto cementitious substrate, cement fibre board.

P Primer Pigmented	0.15-0.2 kg/m <sup>2</sup>
Terralite Undercoat	0.2-0.3 kg/m <sup>2</sup>
Terralite Fine	2.5-3.5 kg/m <sup>2</sup>

*\*Material consumption may vary depending on substrate conditions*

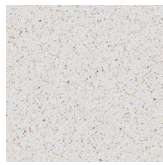
## Technical Data

Coating Thickness	1.5-2.0mm
Specific Gravity	1.70
Packaging	25kg plastic pails
Storage	12 months in original unopened containers





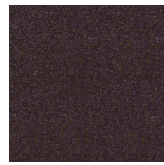
TLF-1128



TLF-1141



TLF-1149



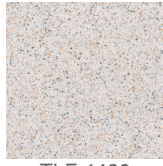
TLF-1168



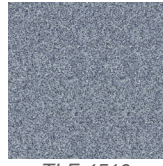
TLF-1229



TLF-1464



TLF-1468



TLF-1510



TLF-1591



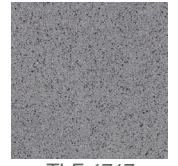
TLF-1633



TLF-1685



TLF-1704



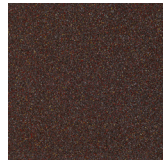
TLF-1717



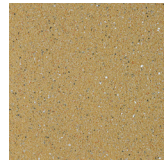
TLF-1719



TLF-1828



TLF-1930



TLF-1994



TLF-2011



TLF-2040



TLF-2047



TLF-2055



TLF-2068



TLF-2071



TLF-2078



TLF-2079



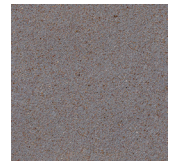
TLF-2081



TLF-2083



TLF-2084



TLF-2085



TLF-2087



TLF-2088



TLF-2093



TLF-2094



TLF-2095



TLF-2097



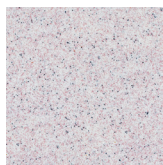
TLF-2107



TLF-10020



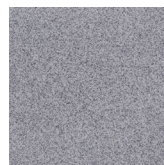
TLF-10069



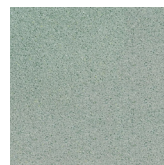
TLF-10079



TLF-10106



TLF-10142



TLF-10208



TLF-10209



TLF-10210



TLF-10211



TLF-10212



TLF-10213



TLF-10214



TLF-10215



TLF-1017



TLF-1174



TLF-1189



TLF-1235



TLF-1306



TLF-1323



TLF-1355



TLF-1365



TLF-1385



TLF-1475



TLF-1477



TLF-1501



TLF-1687



TLF-1757



TLF-1878



TLF-1879



TLF-2088GD



TLF-2139



TLF-2140



TLF-2154

# Terralite™ Fine





[www.terraco.com](http://www.terraco.com)

SWEDEN • UK • IRELAND • RUSSIA • TURKEY • ALGERIA • EGYPT  
SOUTH AFRICA • JORDAN • UAE • THAILAND • VIETNAM • CHINA • KOREA

