

//// TERRACO®

TERRAVERTINE

NATURAL POLISHED PLASTER

The House of Scandinavian Finishing Materials

TERRAVERTINE

NATURAL POLISHED PLASTER

Terravertine natural polished plaster is one of the unique Terraco Designer Collection products formulated using modern technology to create the sophisticated Italian Marmorino stucco effect which can be dated back to Roman times.

Terraco Terravertine is an extremely hard wearing and durable lime based natural plaster for use on most interior surfaces. It is used to create a rustic Mediterranean ambience as it resembles ancient plaster.

Terravertine is finished as a smooth or textured polished surface. A combination of the smooth and the textured applied in horizontal bands across a wall, provides a dramatic and elegant finish.

For a smooth finish, depending on the level of surface burnishing done with a polishing trowel, various degrees of sheen are achieved creating a sense of depth to the finish. While the textured finish allows for unique effects and styles to be created through the use of different tools and application methods. Terravertine is available in natural earth tone shades using conventional shades of natural colourant pastes.

Features & Benefits

- A smooth and / or textured finish
- Good resistance to staining and scratching
- Low odour
- Extremely tough and durable
- Excellent wet scrub resistance ISO 11998
- Non combustible
- Controlled Water Vapour Permeability enables the substrate to “breathe”
- Non hazardous, non toxic, and both user and environmentally friendly

Uses

Terravertine is designed for use on most interior substrates including concrete, cement rendering, lightweight concrete and fair-faced brickwork. The product also performs equally well on gypsum drywall. However, the gypsum board joints must be suitably treated, taped with glass fibre scrim and filled / skimmed with Handycoat Interior, prior to the application of Terravertine.

Terravertine is commonly used to theme hotels and resorts, private residences and villas, foyers and lobbies of banks and other commercial buildings, royal residences and palaces, as well as retail stores, restaurants and beauty salons.

Application

Terravertine is applied as a base coat and finishing coat.

Terravertine Basecoat is applied in areas which require leveling up to 5 mm. Allow to cure for 72 hours. Application is by conventional plastering methods.

Terravertine Finishcoat is applied once the Basecoat has cured using a stainless steel fine-edged trowel. The surface must be finished in one operation to avoid dry joints. Apply two coats of Terravertine Finishcoat as follows:

- A smooth first coat at a consumption rate of $\pm 1.3 \text{ kg/m}^2$ and allow to cure.
- A second coat finished in the desired method, either smooth or knock down texture. Ensure to polish surface while still moist using a polishing trowel to the level of sheen required. Allow to dry for 48 hours.

Architectural Specification

New surfaces: Ensure that all dust, dirt and foreign matter are removed. Also ensure that all surfaces are free from salts, oil, grease and ridges. Protect all adjacent surfaces not to be coated. Repair all cracks, chips, voids and damages using Terraco Terravertine Basecoat. Apply Terraco Terravertine as per architecturally approved sample.

Old surfaces: Ensure that substrate is firm. First wash down the surface with a sugar soap solution, rinse and allow to dry. Repair all cracks, chips, voids and damages using Terraco Terravertine Basecoat. Apply Terraco Terravertine as per architecturally approved sample.

Consumption rate

| | |
|-------------------------|-----------------------------|
| Terravertine Basecoat | 1.5 kg/m ² /mm |
| Terravertine Finishcoat | 1.5 – 2.0 kg/m ² |



Smooth



TVS 01



TVS 02



TVS 03



TVS 04



TVS 05



TVS 06



TVS 07



TVS 08



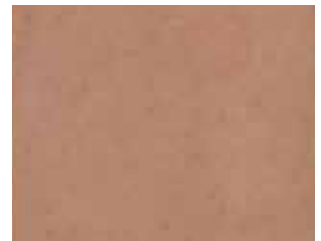
TVS 09



TVS 10



TVS 11



TVS 12

Textured



TVT 50



TVT 51



TVT 52



TVT 53



TVT 54



TVT 55



TVT 56



TVT 57



Rev. 06/2019



www.terraco.com

SWEDEN • UK • IRELAND • RUSSIA • TURKEY • ALGERIA • EGYPT • SOUTH AFRICA • JORDAN • UAE • THAILAND • VIETNAM • CHINA • KOREA