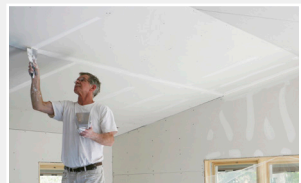




Handycoat™ Gypsum Joint Compound

Ready-to-use Premium Skimming & Jointing Compound for Gypsum Boards (Ceilings & Walls)

- Areas of use:**
- Gypsum boards
 - Cement boards - internal use
 - Concrete walls
 - Plastered concrete
 - Plastered block walls
- Consumption rate:**
- Approx. 70 m² of drywall per 28kg (as joint compound), 25-35 m² / 28kg depending on substrate conditions when applied as skim coat over the surface.



Handycoat™ ACP

Anti-condensation Skimming Compound

- Areas of use:**
- Used as a skimming compound on interior construction surfaces such as gypsum board, sand/cement render, cement fibre board, precast concrete, in-situ concrete
 - Apply on previously painted surfaces
 - Used as skimming on interior surfaces of exterior walls where cold bridging is a problem, where it will eliminate or greatly reduce the incidents of condensation
- Consumption rate:**
- 2 - 3 kg/m² (1.5mm - 2.5mm)



Terramix™ Putty

Cementitious Putty and Repairing Compound for Interior and Exterior

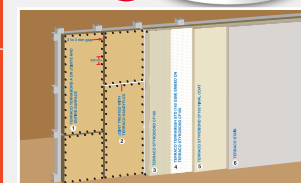
- Areas of use:**
- Fair-faced dense concrete
 - Repairing damages and cracks
 - Repairing nail holes
 - Repairing of concrete block and brick work
 - Light weight concrete
- Consumption rate:**
- Approx. 1.7 kg/m² / 1mm thickness



SB™ CF 100

Highly Flexible External Cement-free Jointing and Rendering System for Sheathing Board.

- Areas of use:**
- Decorative render
 - Cement fibre boards
 - Calcium silicate boards
 - Magnesium oxide boards
 - Exterior grade gypsum boards
 - Concrete substance
- Consumption rate:**
- 2.8 - 3.3 kg/m² (basecoat application for reinforcement of fibreglass mesh depending on surface condition)



Single compound for jointing, leveling & texturing

Handycoat™ Interior Stucco Putty

Ready-mix Filler for Interior Use

- Areas of use:**
- Cementitious substrates
 - Gypsum boards
 - Repairing damages, cracks, nail holes
 - Making good around doors, window architraves
 - Over other Handycoat and Sprayplaster grades
- Consumption:**
- 0.2 - 0.4 kg/m² depending on substrate conditions



Acrylic Crack Filler

Ready-mix Paintable Crack Filler for Exterior and Interior Use

- Areas of use:**
- Suitable for exterior and interior surfaces
 - A thin coat filler for patching hairline cracks in walls, ceilings and soffits
 - For repairing damaged plasterwork, paintwork, filling holes and defects in woodwork
 - Making good exposed concrete
 - Filling of dents in galvanised and anti-rust primed metal
- Consumption rate:**
- 0.5 - 1.5 kg/m² depending on substrate conditions



Thickness 1mm to 3mm

Terramix™ Fine

Repair Mortar and Thin Layer Plaster

- Areas of use:**
- Plastering and repairing of cast in-situ concrete
 - Lightweight concrete
 - Fair-faced dense concrete
 - Concrete blockwork
 - Brick work
- Consumption rate:**
- 1.8 kg/m²/mm



Thickness 1mm to 3mm

StyroSkim™ Putty

Ready-mix, Sheathing Board Jointing and Skimming Compound

- Areas of use:**
- For internal & external walls & ceilings
 - Cement fibre boards
 - Magnesium oxide boards
 - Calcium silicate boards
 - Exterior grade gypsum boards
- Consumption rate:**
- 0.5 - 2.0 kg/m² depending on substrate conditions
- Note: Full system solution to be followed.



Handycoat™ Exterior

Ready-mix Stucco / Filler for Exterior use

- Areas of use:**
- Suitable for interior and exterior surfaces
 - Cementitious substrates
 - Gypsum boards
 - Sprayplaster, wood, galvanised and anti-rust primed steel surfaces
 - For patching hairline cracks in walls and ceilings
 - For old and new substrates before painting
- Consumption rate:**
- 0.5 - 1.5 kg/m² depending on substrate conditions



Handyflex™

Flexible Joint Treatment for Cement Fibre Board / Paintable Crack Repair Filler

- Areas of use:**
- Suitable for interior and exterior use
 - For filling behind skirtings and architraves
 - For filling between concrete elements
 - To repair cracks in plaster and concrete
 - Joint treatment for dry walls, sheathing systems and cement fibre boards
- Consumption rate:**
- Varies depending on use



Terramix™ Standard SP

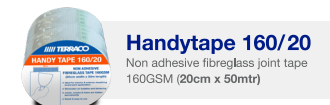
Polymer Modified, Cementitious, Masonry Repair Mortar / Plaster

- Areas of use:**
- Plastering and repairing of cast in-situ concrete
 - Lightweight concrete
 - Fair faced dense concrete
 - Concrete blockwork
 - AAC blockwork
- Consumption rate:**
- 1.5 kg/m²/mm



Thickness 2mm to 12mm

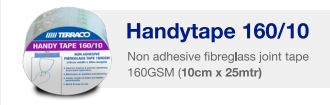
Accessories



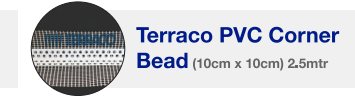
Handytape 160/20
Non adhesive fibreglass joint tape 160GSM (20cm x 50mtr)



Terraco PVC Rolleck Mesh (10cm x 10cm) 25mtr



Handytape 160/10
Non adhesive fibreglass joint tape 160GSM (10cm x 25mtr)



Terraco PVC Corner Bead (10cm x 10cm) 2.5mtr



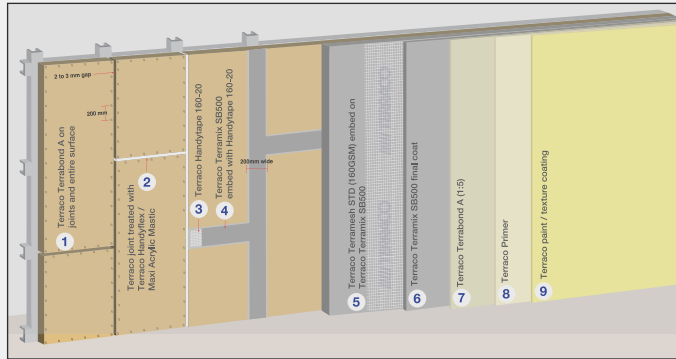
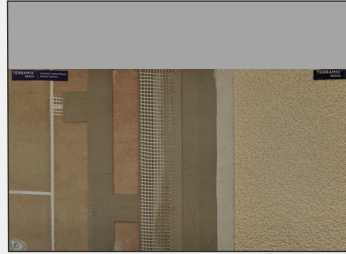
Terramesh 160GSM
Non adhesive fibreglass joint mesh 160GSM (1mtr x 50mtr)

Terraco Rendering System for External Sheathing Boards

Flexible jointing & levelling compound for cementitious boards

- As a jointing compound for sheathing boards
- As an adhesive for sheathing board fixing to substrate
- As an adhesive to bond architectural foam shapes to masonry surfaces
- For finishing panel joints, corner bead, trim, and fasteners patching as well as levelling

TOOLS: Trowel



1 7 Terrabond A (Primer / Bonding agent)



2 Handyflex / Maxi Acrylic Mastic (Joint treatment)



3 Handytape 160/20 (Fibreglass jointing tape)



4 5 6 Terramix SB500 (Jointing & levelling compound)



5 Terramesh STD (160 GSM) (Fibreglass mesh)



8 Tex Primer (Texture coating primer)



9 Terracoat Texture Coating (Acrylic based texture coating)



Levellers, Fillers & Mastics



Manual or spray applied ready-mix levelling plaster upto 10 mm thickness

- High coverage
- Easy to use
- Quick drying

For Internal Ceilings & Walls

TOOLS



Sprayplaster™
Basecoat (BC)

Manual or spray applied ready-mix skim coat upto 2 mm thickness

- Fire resistant (ASTM E84 class A)
- Low VOC
- Does not flake off

For Internal Ceilings & Walls

TOOLS



Maxispray™ FC
Plastering Finish Coat