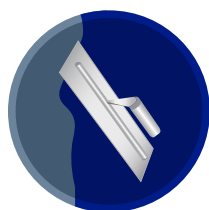


# //// TERRACO®



**DECORATIVE COLOURED  
CONCRETE EFFECT**

*The House of Scandinavian Finishing Materials*

For over **40 years**, **Terraco** has been developing innovative and class-leading sustainable solutions for the construction industry. We believe in working closely with customers to accomplish projects together. We are committed to helping customers build better structures and better buildings by developing innovative and class-leading solutions.

**Terraco's** values of innovation, excellence, and life are at the core of the company's thought process. With a clear purpose of helping customers build better, **Terraco** continuously strives to create solutions that are innovative and sustainable.

### We Believe in Solutions

We believe in sustainable tailor-made solutions by working closely with customers to understand their perspectives and needs. The aim is not just problem-solving but also to ensure the solutions created do not impact other aspects of the ecosystem that we live in.

### We Believe in Innovations

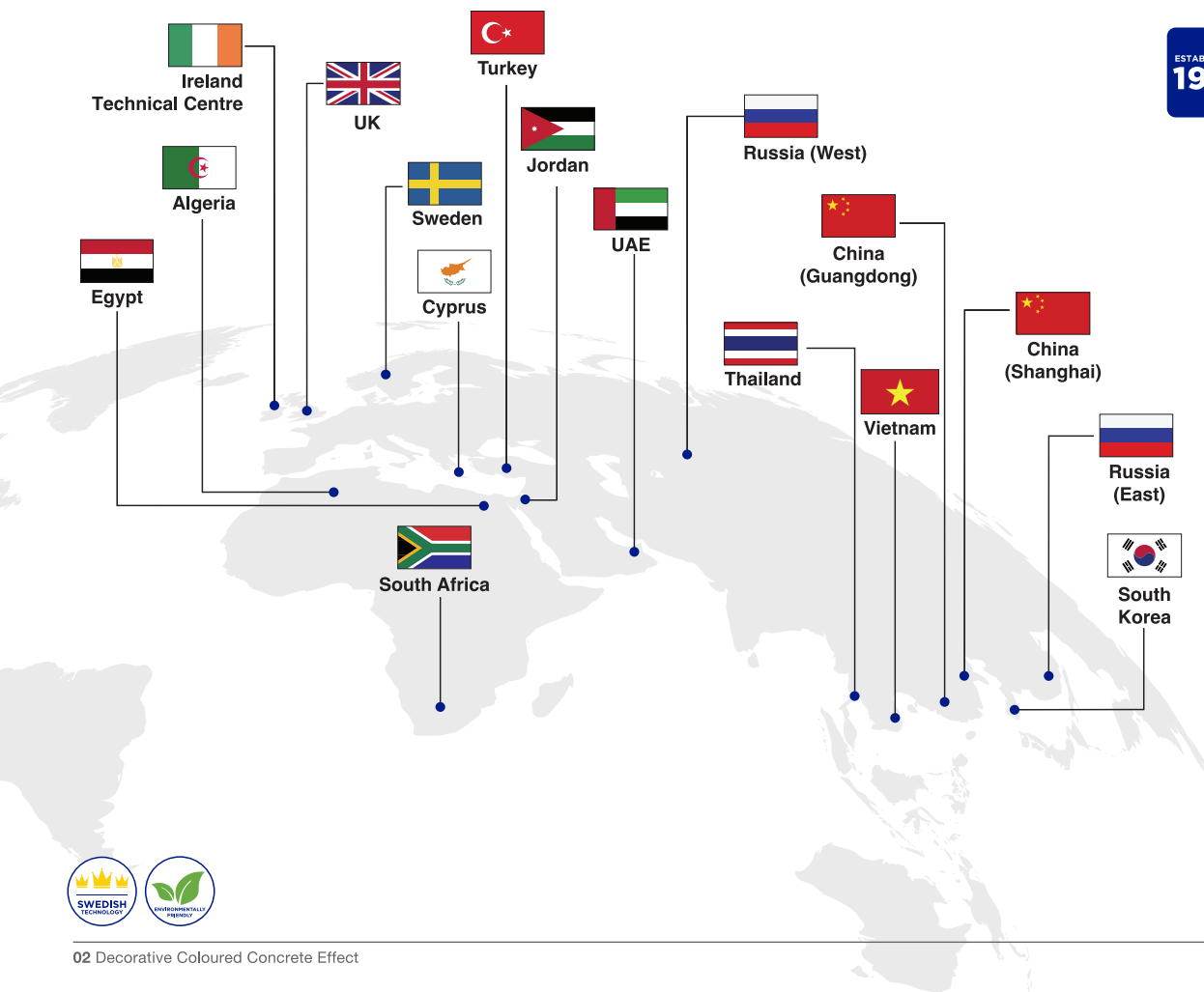
We are committed to delivering continuous innovations. These innovations are spearheaded by the **Terraco** Technical Centre in Ireland, which coordinates the efforts of all technical personnel across the group, driving cooperation with international technology partners, and conducting joint research projects.

### We Believe in Sustainability

We are driven to build a sustainable world, with a clear commitment to future generations. 100% of our products are water-based, low or ultra-low VOC - keeping living spaces free from harmful chemicals and emissions. Our Exterior Insulation Finishing Systems (EIFS) considerably reduce heating and cooling energy consumption. And our flooring solutions use recycled environmental waste. We believe in sustainability through products for a better world.

## Terraco Group

ESTABLISHED IN <b>1980</b>	PRESENCE IN <b>75</b> COUNTRIES	<b>20</b> FACTORIES
-------------------------------	---------------------------------------	------------------------



## NATURAL POLISHED INTERNAL PLASTER

**Primer:** Tex Primer aggregated | **Terravertine Finishcoat** (Upto 2mm thickness)

Terravertine natural polished plaster is one of the unique Terraco Designer Collection products formulated using modern technology to create the sophisticated Italian marmorino stucco effect which can be dated back to Roman times. A combination of smooth and textured finish, applied in panels, provides for a dramatic and elegant finish. Terravertine is available in natural earth tone shade using conventional shades of natural colourant paste.

### Areas of Use

- Concrete
- Cement rendering
- Lightweight concrete
- Fair-faced block-work
- Gypsum & sheathing dry-wall

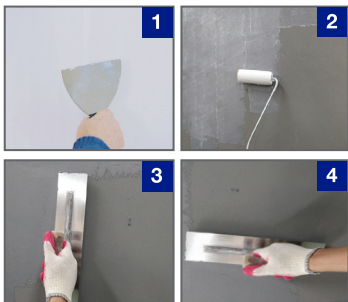
### Features and Benefits

- Highly resistant to staining and scratching
- Smooth and / or textured polished finish
- Unique high quality polished plaster finish
- Environmentally friendly
- Non-combustible

### Technical Information

<b>Coverage</b>	Finish coat: 1.5-2kg/m <sup>2</sup>
<b>Drying time</b>	Allow 24 hours
<b>Tools</b>	— Trowel
<b>Mixing ratio</b>	Finishcoat 15kg powder: 5.5 to 6.5 ltr water
<b>Packaging</b>	Finishcoat: 15 kg paper bags / pails
<b>Shelf life</b>	6 months in original unopened bags 12 months in original unopened pails

### Surface Preparation and Application



1. Ensure it is smooth and level. Repair all imperfections using Handycoat Interior.
2. Apply 1 coat of Terraco Tex Primer Aggregate.
3. Apply 2 coats of Terraco Terravertine Finishcoat using white steel fine-edged trowel and finish with desired method, either smooth or texture finish.

### Package and Standard Colours

**TERRAVERTINE**  
NATURAL POLISHED PLASTER



**\*Please note:** As the Terravertine product range is formulated using a combination of natural raw materials, colour variances may occur. Should you wish to minimise these colour differences, it is recommended that the applicator uses products from the same batch. Deep shades in cementitious dry powder products results in patchy look due to blooming effect when it is applied smooth & levelled. Inconsistency in water content & mixing time are also contributing factor for colour variation.

## POLYMER ENHANCED DECORATIVE COLOURED RENDER

**Primer: Terrabond A**

**Decorend Fine:** (1mm to 3mm application) | **Decorend Coarse:** (4mm to 10mm application)

Decorend is a superior quality, decorative, economical coloured rendering, designed for long-life protection of exterior facades. To satisfy a variety of requirements, two finishes are available, Decorend Fine and Decorend Coarse. Decorend is manufactured in natural colours and provides a double tone finish.

### Areas of Use

- Concrete
- Cement rendering
- Lightweight concrete
- Fair-faced block-work
- On Expanded Polystyrene (For features)
- EIFS System

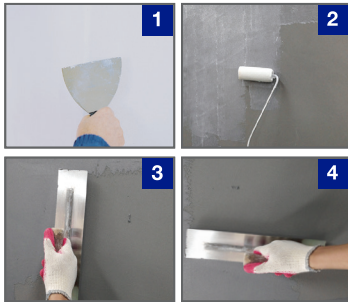
### Features and Benefits

- Long-life protection of exterior facades
- Superior weather and pollution-resistant properties
- Environmentally friendly
- Highly resistant to staining and scratching
- Non-combustible: ASTM E84 class A (Tested & Certified)
- DGBES Compliant

### Technical Information

<b>Coverage</b>	Decorend Fine: 1.40 kg / m <sup>2</sup> / mm Decorend Coarse: 1.25 kg / m <sup>2</sup> / mm
<b>Drying time</b>	Allow 24 hours
<b>Tools</b>	White steel fine-edged trowel/patterning tools and spray gun
<b>Mixing ratio</b>	Decorend Fine: 5.5 to 6 ltr of water / 25kg bag Decorend Coarse: 6.5 to 7 ltr of water / 25kg bag
<b>Packaging</b>	25kg paper bags
<b>Shelf life</b>	6 months in original unopened bags

### Surface Preparation and Application



1. Suitably prepare substrate. Ensure it is smooth and level. Repair all imperfections using Handycoat Interior or Exterior Terramix.
2. Apply one coat of Primer prior to application of Decorend.
3. Apply 1st thin coat of Decorend by spray gun or manually with a trowel or spatula and level smooth.
4. Apply 2nd coat of Decorend once 1st firm and dry. 24 hours after application, cure the surface for 3 days using a light water spray.

\*Note: Topcoat recommended: Terraco Silcoat WB / Silcoat WB EX200

### Package and Standard Colours

## Decorend Fine



\*Please note: As the Decorend product range is formulated using a combination of natural raw materials, colour variances may occur. Should you wish to minimise these colour differences, it is recommended that the applicator uses products from the same batch. Deep shades in cementitious dry powder products results in patchy look due to blooming effect when it is applied smooth & levelled. Inconsistency in water content & mixing time are also contributing factor for colour variation.

## TYROLEAN RENDERING - MINERALS BASED DECORATIVE RENDER

**Primer:** Terrabond A

**Terol Smooth, Terol Glitter and Terol Crystal**

Terol is a range of superior quality, mineral based decorative renders designed for long-life protection of exterior facades. Product is available pre-tinted in white and pastel colours and neutral (where it is top coated with Terracoat Stain). Terol is available in a range of decorative finishes and in a series of different grain sizes.

**Recommendation:** Any deep colour in dry products should be avoided so for pigmented option neutral with TTC stain is recommended.

### Areas of Use

- Concrete
- Cement rendering
- Lightweight concrete
- Fair-faced block-work

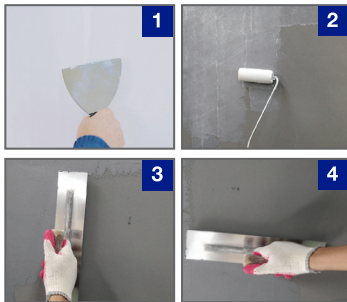
### Features and Benefits

- Long-life protection of exterior facades
- Superior weather and pollution-resistant properties
- Environmentally friendly

### Technical Information

<b>Coverage</b>	Terol Coarse: 6-7 kg / m <sup>2</sup> Terol Smooth: 2-3 kg / m <sup>2</sup>
<b>Drying time</b>	Allow 24 hours
<b>Tools</b>	White steel fine-edged trowel/patterning tools and spray gun
<b>Mixing ratio</b>	Terol Coarse: 5.0-5.5 Ltr water / 25kg bag Terol Smooth: 5.75-6.25 Ltr water / 25kg bag
<b>Packaging</b>	25kg paper bags
<b>Shelf life</b>	6 months in original unopened bags

### Surface Preparation and Application



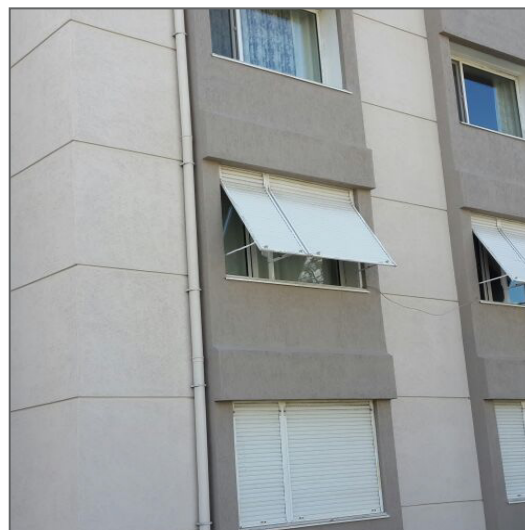
1. Suitably prepare substrate. Ensure it is smooth and level. Repair all imperfections using Handycoat Exterior / Terramix.
2. Apply one coat of Primer prior to application of Terol.
3. Apply 1<sup>st</sup> coat of Terol. Control application to avoid dry joints. Do not apply moisture to the trowel as it may cause discolouration.
4. Apply 2<sup>nd</sup> coat of Terol (smooth or textured finish). Allow to air dry for 72 hours.

**\*Note:** Topcoat recommended for white and pastel colours, **Terraco Silcoat WB**

**For neutral and stain application:** After Terol Neutral application, apply 2 coats of TTC Stain.

### Package and Grades

# Terol™



**\*Please note:** As the Terol product range is formulated using a combination of natural raw materials, colour variances may occur. Should you wish to minimise these colour differences, it is recommended that the applicator uses products from the same batch. Deep shades in cementitious dry powder products results in patchy look due to blooming effect when it is applied smooth & levelled. Inconsistency in water content & mixing time are also contributing factor for colour variation.

## REPLICATES THE LOOK OF CONCRETE

**Primer: Terrabond A** (1:5 with water)

**Stucco Vintage G300 Floor** (Self levelling & Trowel applied - smooth finish)

**Top Coats: Diamond Seal**

Stucco Vintage Range is a decorative mineral floor finish designed to give the appearance of a natural cast concrete floor. It is easy to apply and has a range of attractive patterns can be achieved depending on application tools and installation method. It is finished with a clear acrylic or solvent free epoxy topcoat resulting in an attractive finishes, which is easy to maintain.

**Stucco Vintage is manufactured in 6 standard colours.**

## Features and Benefits

- Excellent strength
- Abrasion resistant
- Highly durable
- Low VOC system
- Two component: Cementitious Powder and Resin
- Internal use

## Areas of Use

- Suitable for porous and non-porous substrates (ceramic tiles & epoxy coatings)
- Offices, Department Stores & Showrooms
- Restaurants, Shops, Hotels & Resorts
- Private Homes & Apartments
- Existing / new concrete

## Technical Information

### Stucco Vintage G300

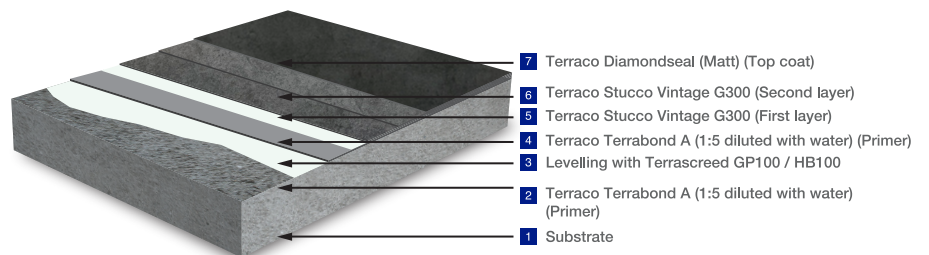
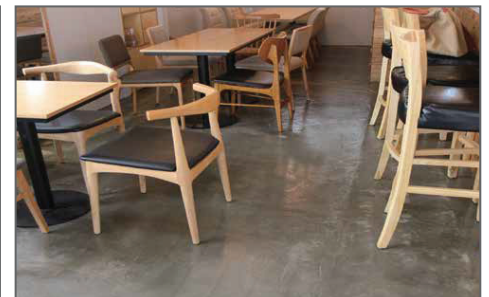
<b>Coverage</b>	1.5 - 2.0 kg/m <sup>2</sup>
<b>Thickness</b>	1.5 to 2 mm
<b>Drying time</b>	Allow 24 hours
<b>Tools</b>	Steel trowel or spreader to the required thickness. Various patterns can be achieved using various application tools and methods.
<b>Mixing Ratio</b>	10 kg powder / 5 kg resin
<b>Packaging</b>	15 kg plastic pails (10 kg powder / 5 kg resin)
<b>Shelf life</b>	9 months in original unopened container

### Diamond Seal Clear water borne acrylic floor sealer (Matt Finish)

<b>Coverage</b>	0.2 kg/m <sup>2</sup>
<b>Drying time</b>	Surface dry: 8 hours
<b>Tools</b>	Roller , scraper or spray
<b>Colour</b>	Transparent clear
<b>Packaging</b>	20 kg plastic pail
<b>Shelf life</b>	12 Months in original unopened containers

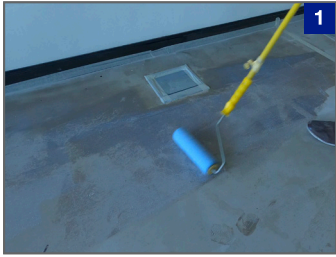
## Package and 3D System

# Stucco Vintage



**\*Please note:** Colour result may not exactly match the samples, standard shades and delivered products due to difference in product and application method. Terraco cannot be held liable for slight differences in colour reproduction.

## Stucco Vintage G300 Application (onto concrete substrate)



1



2



3



4

1. Ensure new and old substrates are clean, dry, sound, and suitably prepared. Apply Terrabond A (1:5).
2. After mixing the 2 components as per mixing instructions, apply Stucco Vintage G300 using a stainless steel trowel. Sanding recommended.
3. Apply second coat Stucco Vintage G300 using a stainless steel trowel to the desired finish.
4. Allow to dry for 24 hours. Ensure moisture content is below 5%. Sanding the substrate is required. Clean and apply the desired top coat.

**\*Note:** We recommend to use Terrascreed prior to Stucco Vintage application as shown in the below section image.

## Application (over existing tiles)



1. Substrate to be roughened prior to application. Clean surface and allow to dry.

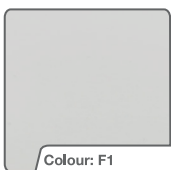
**\*Note:** The tile should be fully adhered to the surface.



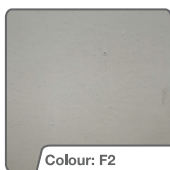
2. Apply Terrabond AP201 on entire tile after sanding the existing tile. Apply Terrascreed HS 100 to level the surface.

After the surface treatment, follow Stucco Vintage G300 application as recommended above.

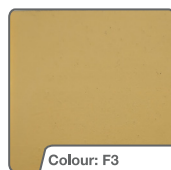
## Standard Colours and 3D System



Colour: F1



Colour: F2



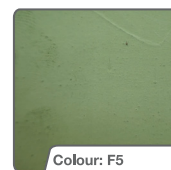
Colour: F3



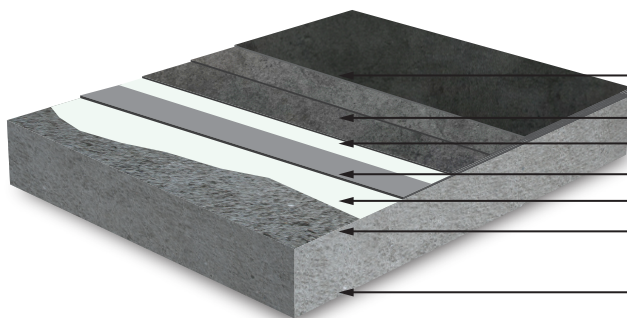
Colour: F4



Colour: F6



Colour: F5



- 7 Terraco Diamondseal (Matt) (Top coat)
- 6 Terraco Stucco Vintage G300 (Second layer)
- 5 Terraco Stucco Vintage G300 (First layer)
- 4 Terraco Terrabond A (1:5 diluted with water) (Primer)
- 3 Levelling with Terrascreed GP100 / HB100
- 2 Terraco Terrabond A (1:5 diluted with water) (Primer)
- 1 Substrate



**\*Please note:** Colour result may not exactly match the samples, standard shades and delivered products due to difference in product and application method. Terraco cannot be held liable for slight differences in colour reproduction.

## NATURAL CAST CONCRETE EFFECT

Primer: Terrabond A (1:5 water)

Stucco Loft M100 (Mottled mid-sheen finish)

Stucco Loft M100 is an acrylic based designed to give the appearance of a natural cast concrete effect stucco suitable for use on most interior wall surfaces. Stucco Loft M100 can be applied to produce both traditional and modern effects by adjusting the application methods.

The final wall effect is a mottled mid-sheen finish.

Stucco Loft M100 is manufactured in 6 standard shades and also can be tinted using the Terraco tinting system.

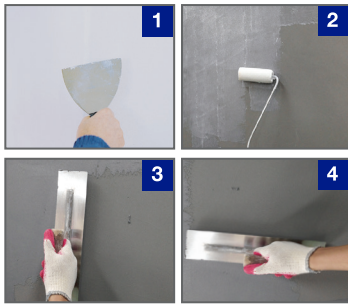
### Features and Benefits

- Cast concrete effect
- Non-combustible
- Mottled mid-sheen finish
- Environmentally friendly
- Suitable for Do it yourself (DIY) use

### Areas of Use

- Restaurants
- Galleries
- Bathrooms and kitchens (not for water immersion area)
- Hotel lobbies

### Application Method:



#### Stucco Loft M100 Application (onto Concrete, Plastered or Cement board)

1. Ensure substrates are clean, dry sound & suitably prepared.
2. Apply one coat of Terrabond A (1:5 water).
3. Apply two coats of Stucco Loft M100 using trowel.

### Technical Information:

<b>Coverage</b>	0.5 - 1.2 kg/m <sup>2</sup> depending on desired effect	<b>Specific gravity</b>	1.55 - 1.68
<b>Drying time</b>	30 - 60 minutes	<b>Packaging</b>	5kg and 25kg plastic pails
<b>Tools</b>	Trowel or spatula	<b>Shelf life</b>	12 months in original unopened containers

### Package and Standard Colours

## Stucco Loft M100



\*Please note: Colour result may not exactly match the samples, standard shades and delivered products due to difference in product and application method. Terraco cannot be held liable for slight differences in colour reproduction.





Istanbul Furniture Showroom, Abu Dhabi, UAE



2 Storey Private Villa, Bahrain



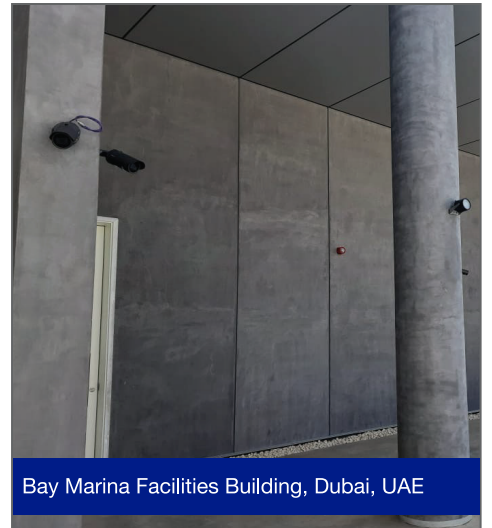
Nike Showroom in Dubai Mall, Dubai, UAE



Samsung Showroom in Dubai Mall, UAE



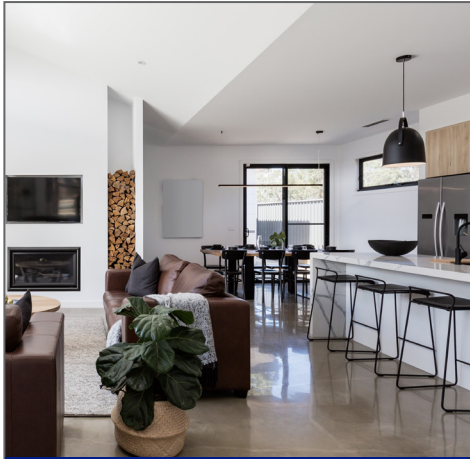
Preru Coffee Shop at Ras Al Khaimah, UAE



Bay Marina Facilities Building, Dubai, UAE

**\*Please note:** Colour result may not exactly match the samples, standard shades and delivered products due to difference in product and application method. Terraco cannot be held liable for slight differences in colour reproduction.

Technical Data Sheets and Material Safety Data Sheets are available from your Terraco representative or on [www.terraco.com](http://www.terraco.com). Although every precaution has been taken to ensure the accuracy of the colours and textures represented herein they should be considered indicative. Products containing natural aggregates may be susceptible to colour variation and we recommend that you order sufficient quantity for the complete project at one time. Terraco does not warrant the accuracy of the information provided herein and all information is subject to change without notice. © All rights reserved. Terraco Holdings Ltd.



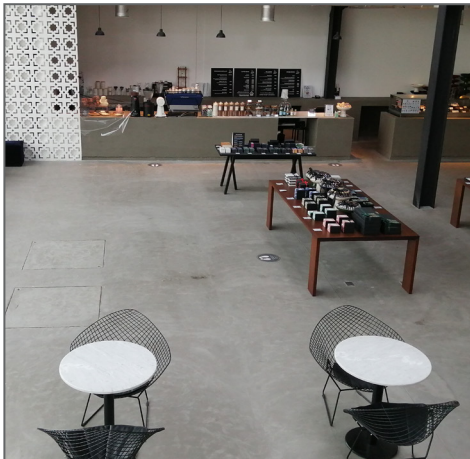
Private Residence, Dubai, UAE



Skydive Head Office Dubai Marina, Dubai, UAE



Icons Coffee Shop, Dubai, UAE



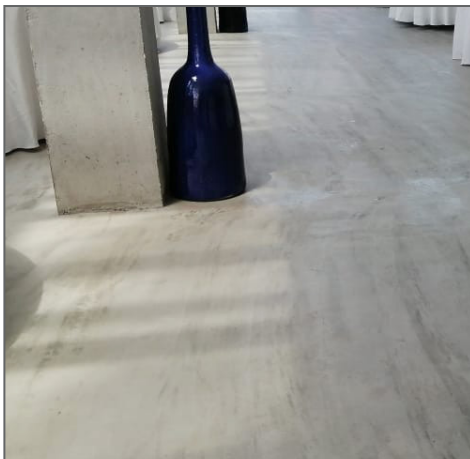
Mirzam Chocolate Factory, Al Quoz, Dubai, UAE



Red Shrimp Restaurant, Zaway Walk, Sharjah



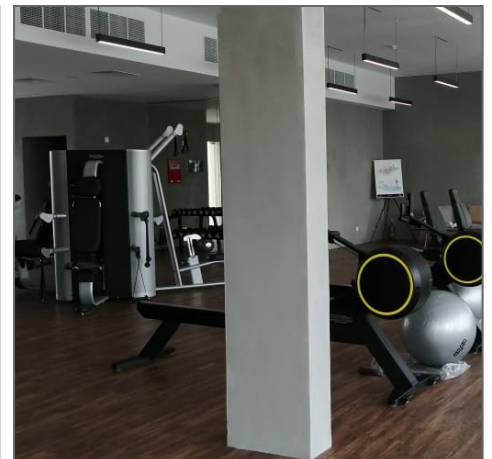
Fad institute of luxury fashion, Dubai, UAE



Saadiyath Beach Resort Restaurant, Abu Dhabi



Residential Tower, Muweilah, Sharjah, UAE

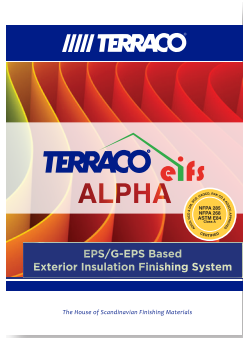


Nshama Town Houses, Al Qudra, Dubai, UAE

**\*Please note:** Colour result may not exactly match the samples, standard shades and delivered products due to difference in product and application method. Terraco cannot be held liable for slight differences in colour reproduction.

Technical Data Sheets and Material Safety Data Sheets are available from your Terraco representative or on [www.terraco.com](http://www.terraco.com). Although every precaution has been taken to ensure the accuracy of the colours and textures represented herein they should be considered indicative. Products containing natural aggregates may be susceptible to colour variation and we recommend that you order sufficient quantity for the complete project at one time. Terraco does not warrant the accuracy of the information provided herein and all information is subject to change without notice. © All rights reserved. Terraco Holdings Ltd.

# Key Products



**ALPHA**  
EPS/G-EPS Based Exterior Insulation Finishing System



**PERMA**  
Mineral Wool Based Exterior Insulation Finishing System



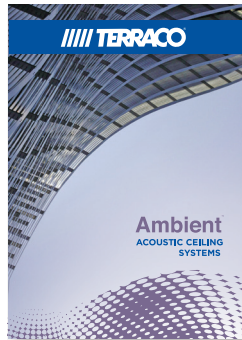
**Modular Construction Solutions**



**Renovation & Retrofit Solutions**



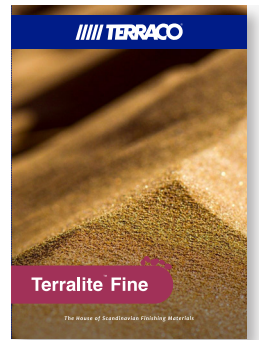
**Waterproofing Solutions**



**Ambient Acoustic Systems**



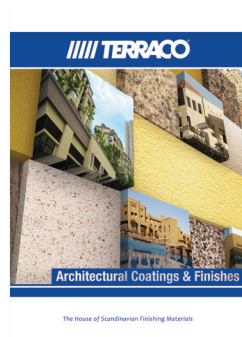
**Terralite Trustone**



**Terralite Fine**



**Monocote Mineral Plaster**



**Architectural Coatings & Finishes**



**Designer Collection**



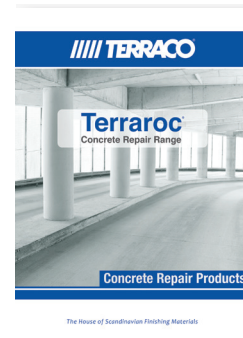
**Performance Tiling - Adhesives & Grouts**



**General Purpose Tiling - Adhesives & Grouts**



**Handycoat Ready-mix Levellers & Fillers**



**Terraroc Concrete Repair Products**



[www.terraco.com](http://www.terraco.com)

SWEDEN • UK • IRELAND • RUSSIA • TURKEY • ALGERIA • EGYPT  
JORDAN • UAE • THAILAND • VIETNAM • CHINA • KOREA